

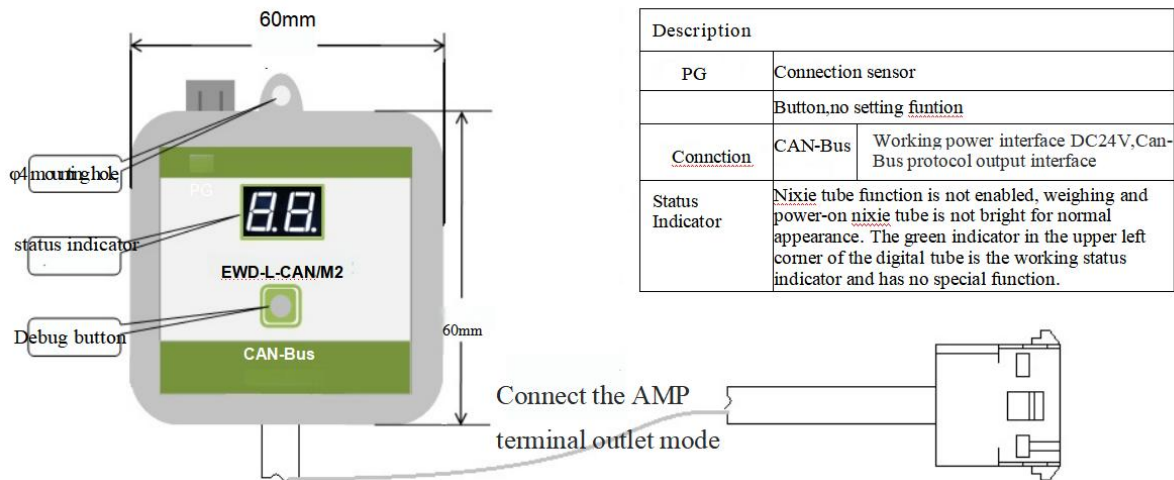
EWD-L-CAN/M2 Elevator Load Weighing Device introdtion manual V2.2

Notice: In any case, we are only responsible for the quality of the products during the warranty period.

Description:

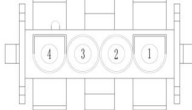
- 1. The indicator on the upper left corner of the digital tube is the working status indicator, and has no other meaning;
- 2. The nixie tube and button functions are disabled. After power-on, the nixie tube is not displayed normally

● Pruducts apperacne diagram



Note: All wiring ports are strictly prohibited from plugging and unplugging; Do not connect the power cord to the CAN communication port (port P/N), otherwise the device will be damaged immediately!

● Technical Specification:

1.	Application	Suitable for all traction, hydraulic, strong drive elevator weighing use (load range depends on the sensor range).			
2.	Sensitivity	Elevator rated load weight/200 (when rated load 1T the weight is 5.0kg) [This indicator will be affected by the mechanical properties of the elevator]			
3.	System Error	≤1.5%(-20~55℃)			
4.	Output and wiring mode	Brown line	DC +24V/ ≤50mA	Amp terminal hole 1	Amp terminal diagram: 
		Blue line	Com	Amp terminal hole 2	
		Black line	Can_H	Amp terminal hole 3	
		Gray line	Can_L	Amp terminal hole 4	
5.	Working Temperature:	-20~55℃			
6.	Power Supply:	DC 24V(±10%), Machine operating current≤100mA			

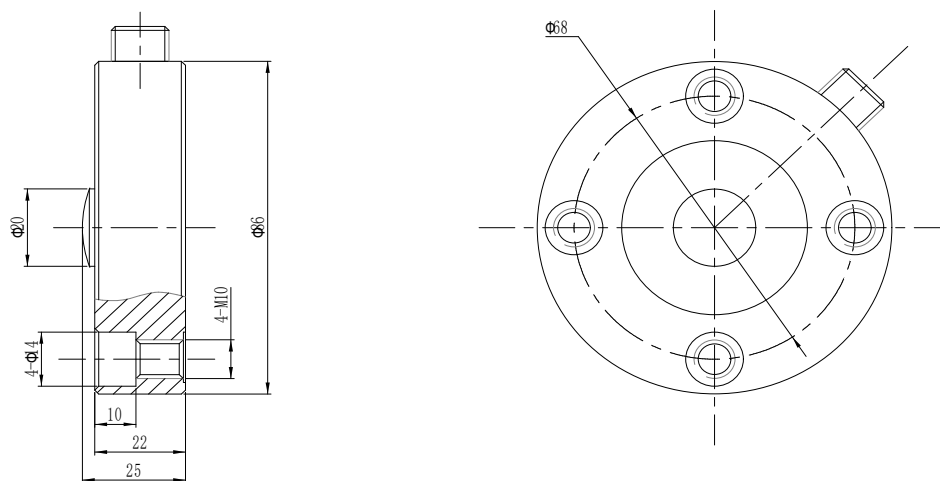
◆*: The intension exceeding the limit parameters listed above may result in the abnormality or permanent damage to the system.

● Main features:

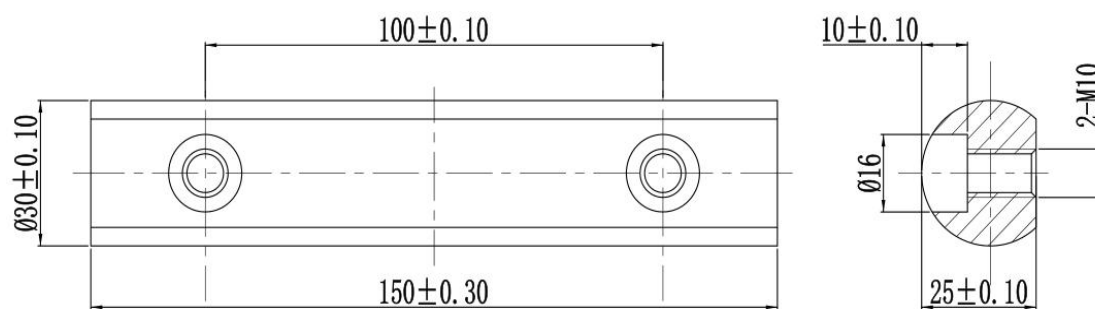
- 1. The weighing device adopts a load sensor-led sensor + controller structure, and the sensor is directly installed in the elevator rope head combination;
- 2. Output directly with Can-Bus protocol according to the change of car payload;

● Appearance, installation mode, and structure of the sensor

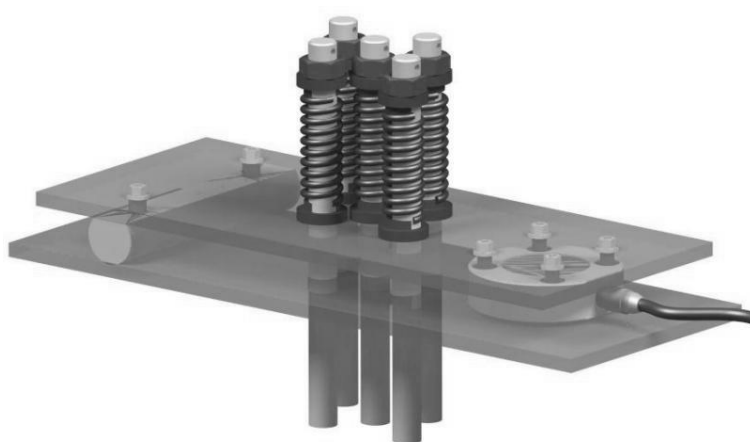
1: XCL-Y/8625 Load sensor dimensions (measuring range: 1.2T、2.2T、3T、4T、5T、7T)



Pressure rod size diagram:

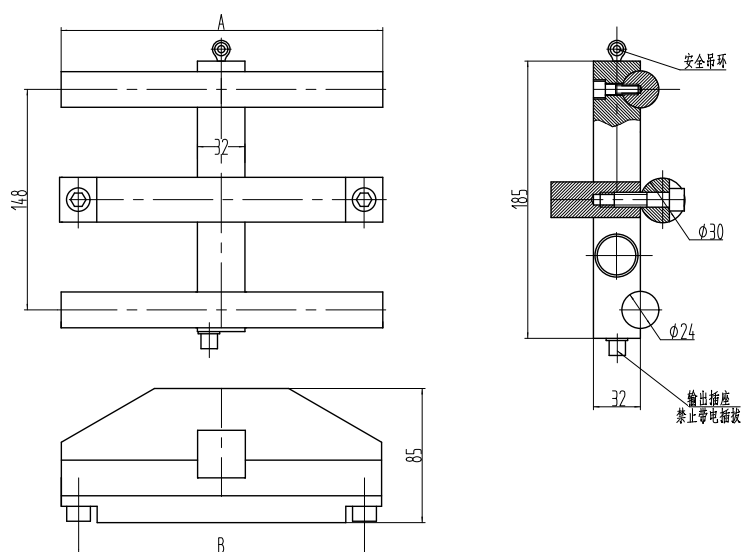


Installation Method:



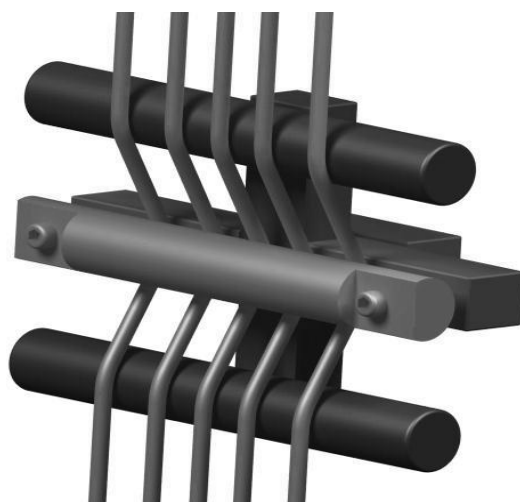
2.XCL-ZL/W Load sensor dimensions and installation method

2.1 Sensor size diagram



Note: $\phi 6$ wire rope must be used to connect the safety ring and secure it on the support of the traction machine to prevent the sensor from falling off during the installation and commissioning of the elevator to ensure personal safety

2.2 Installation Method:



传感器量程	传感器相关尺寸	
KN	A	B
20	216	192
50	260	238

Weighing device debugging method:

Step	Project	Specific operation
First step	Study praperation	1. After the controller and sensor are correctly installed and checked, the elevator is stopped at the bottom floor and the car is placed in the empty load. 2. After the weighing device is powered on and connected to the weighing device through the tablet computer, check whether the AD value CAN be communicated with the weighing device; (If no or the data is wrong, check whether the sensor connection is good and the ground cable is firmly grounded)
Second step	"No-load" self-learning	1. Go to the menu bar of "Weighing Self-learning" in the tablet computer 2. Send no-load self-learning instructions, and the weighing device remembers the no-load data.

Third step	"Rated-load" self-learning	1. Load the weight of the elevator to 100% of the load, such as the load of 1000kg elevator, add 1000kg weight in the car. 2. Through the tablet computer, send the load self-learning instruction, and the weighing device remembers the load data. 3. After learning is completed, the weighing will enter the normal working state
------------	----------------------------	---

※note: 1.The power supply voltage level must meet the requirements, and ultra-high voltage will cause damage to the weighing device;

2.CAN-BusThe sequence of signal lines, connected in reverse, may cause self-learning failure.

● **Promise:**

1. The weighing device in the factory within one year of the product quality problems, free replacement (product seal damage will not be accepted).

2. If the weighing device is abnormal during commissioning or use, please contact us directly

● **others:**

Packing:	Elevator weighing device controller	1piece	Sensor attachment	1set
	Screw sets M4×40	2sets	User's Manual	1piece